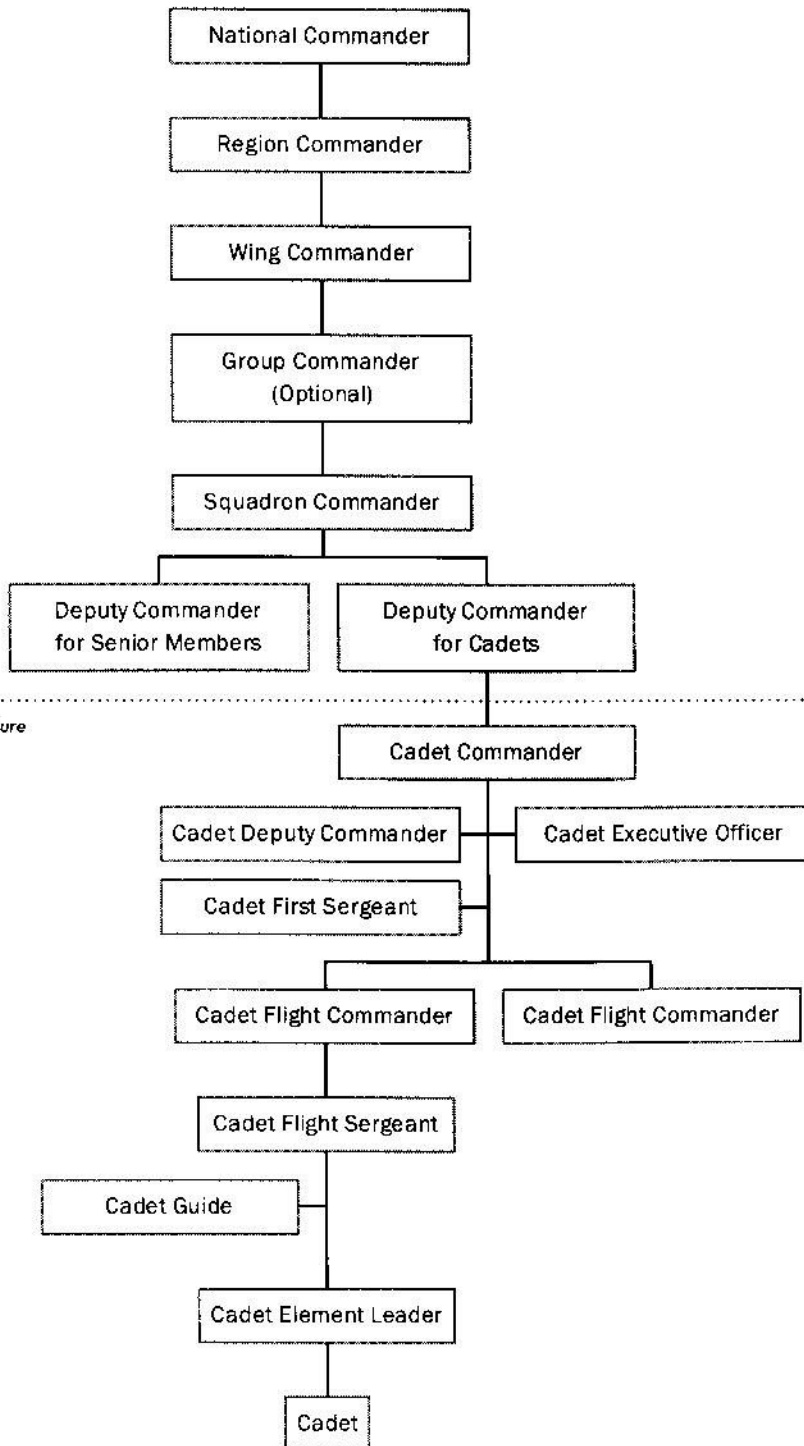


The CAP Chain of Command – Wiring Diagram

This diagram is simplified for new cadets. While CAP is governed by a Board of Governors, and other national-level boards provide leadership, you are expected to know and understand the chain of command only as it extends from you to your National Commander.

To learn more about CAP's national-level boards, the role of the CAP National Headquarters, and CAP's relationship with the Air Force, visit the "chain of command" pages in the Cadet Programs section at www.cap.gov.



All CAP commanders are unpaid volunteers serving their community.

CAP is organized into 8 geographic regions.

There are 52 wings, one for every state plus Puerto Rico and the District of Columbia.

Groups are found mostly in large or heavily-populated wings.

The squadron is the basic operational unit in CAP.

This diagram depicts a composite squadron, and therefore has two deputy commanders.

Cadets are appointed to their positions by the squadron commander.

Staff officers support commanders by providing technical expertise. Staff functions are discussed in chapter 10.

Not all squadrons have a need or ability to fill every position shown here.

The element leaders, flight sergeants, and the first sergeant work together through the "NCO support channel," which is discussed in chapter 3.

Most commanders have an "open door" policy, but it is usually best to solve problems at the lowest level possible.

If you have a question or idea, share it with your element leader.

If you have a problem you do not feel comfortable discussing with another cadet, see your deputy commander for cadets or squadron commander.